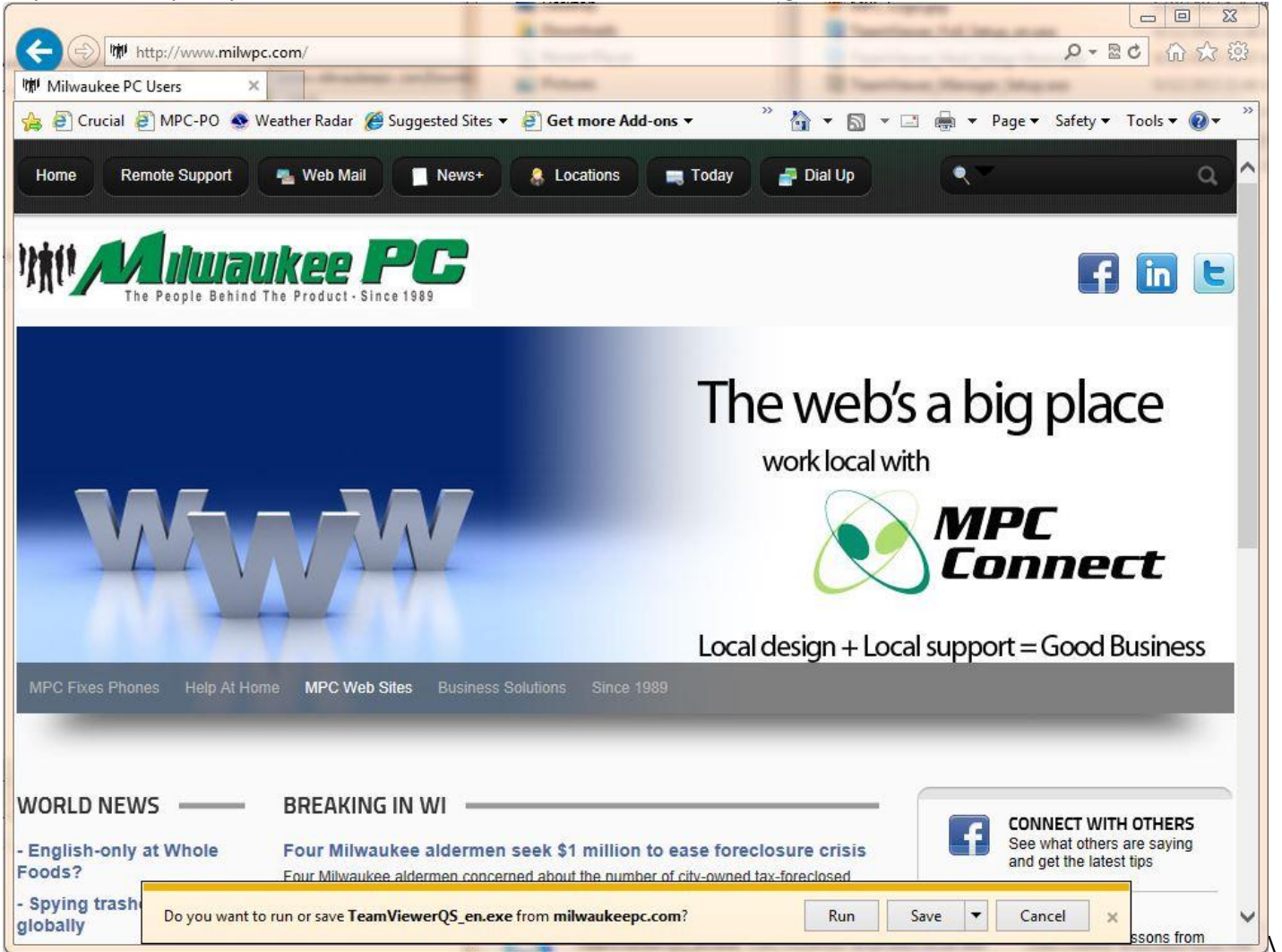


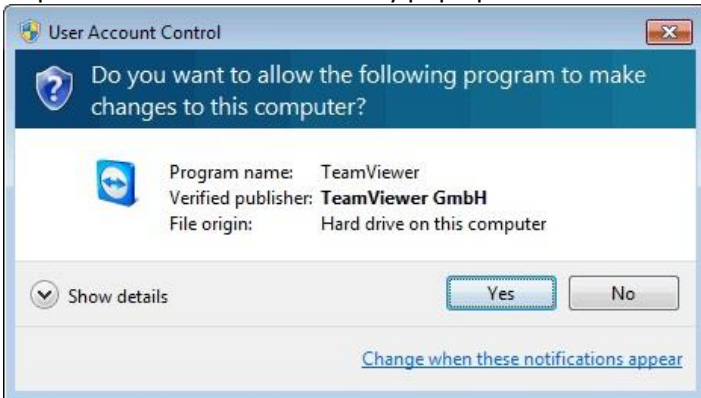
For Remote Assistance: Follow these simple steps

Step 1: Go to http://milwaukeepc.com/downloads/TeamViewerQS_en.exe

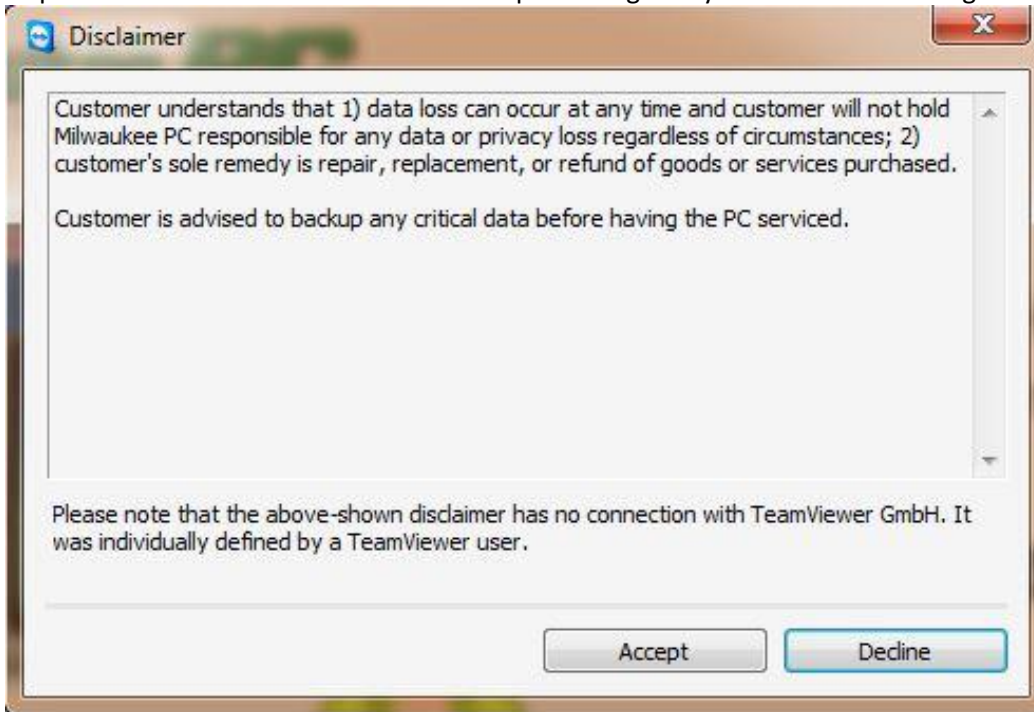
Step 2: This will prompt to "Run, Save or Cancel", Click on "Run". See Image below



Step 3: User Account Control may pop up. If so click on "Yes" or "Allow"



Step 4: Read the Disclaimer and Click "Accept" stating that you understand and agree to the terms.



Step 5 : When the following window appears give the "Your ID" and "Password" to your Milwaukee PC Representative.

